

# Instruction Manual for Mast Clamp

## 1. Cut out in Mast

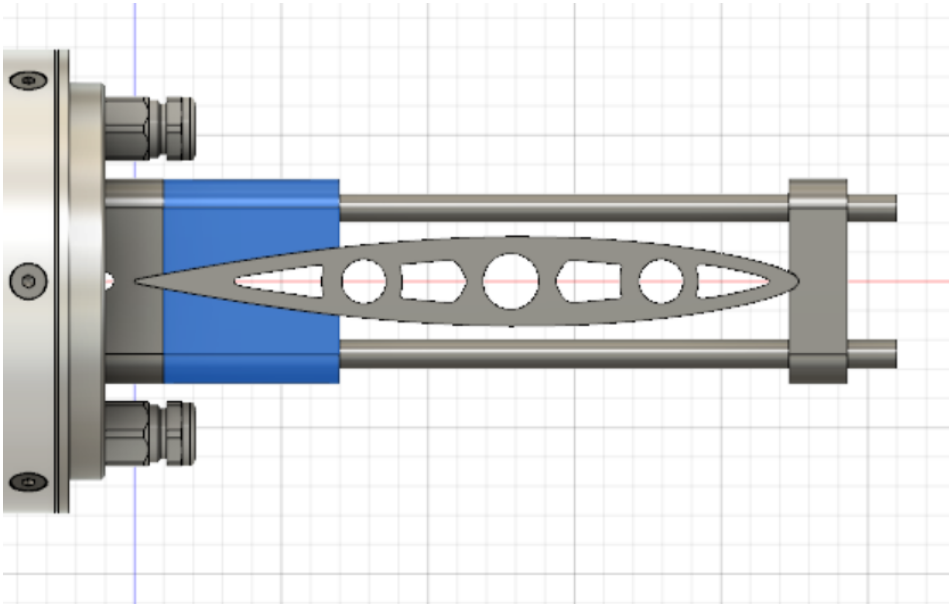


Cut out at end of profile is 8 x 40 mm (depth x height), center is approximately 90-120mm from bottom of profile.

Further drill holes or mill slots in the section of the profile where you have enough space to run wires inside up.

Later the spacer will fit in the recession

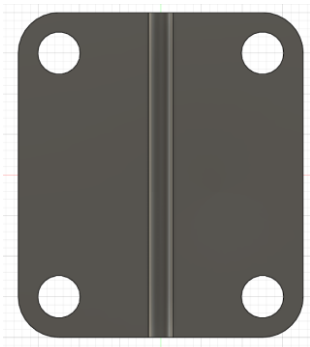
## 2. Damper and Connecting Spacers





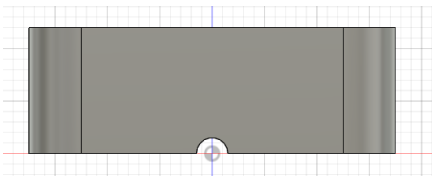
Front and backside are identical spacers, which are caught by M5 screw rods and closed by M5 nuts.

The blue marked parts are 2 3D printed side framing elements, following the shape of the individual mast.

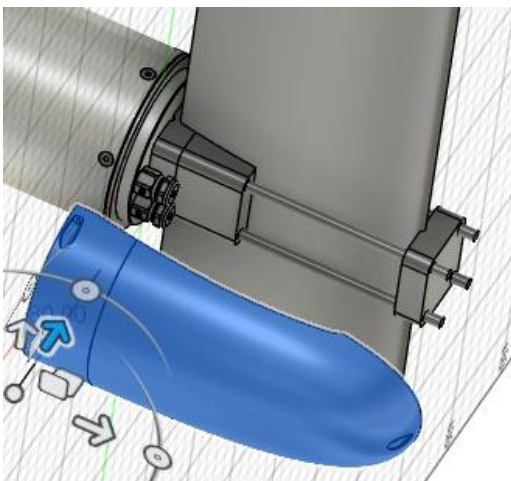


Dimension of Piece is 35 x 40 x 12 mm (width x height x thickness)

Make sure that the front plate has a notch in the middle to catch the front section of the mast profile properly.



### 3. Cone attachment



Both cone parts are symmetrical and can be screwed directly on the Mast via M2 screws